

Data handling

Making a branching database about Owls

Pictures for use with these branching databases can be found in the handling data folder on the CD-Rom.

There are only five resident British owls; the Snowy Owl last bred regularly in the Shetlands in the 1970s, and is not included in this branching database. The simplest of these 'tree' diagrams uses only visual information and with some adult support could be used by KS1 pupils. The others require a higher level of reading.

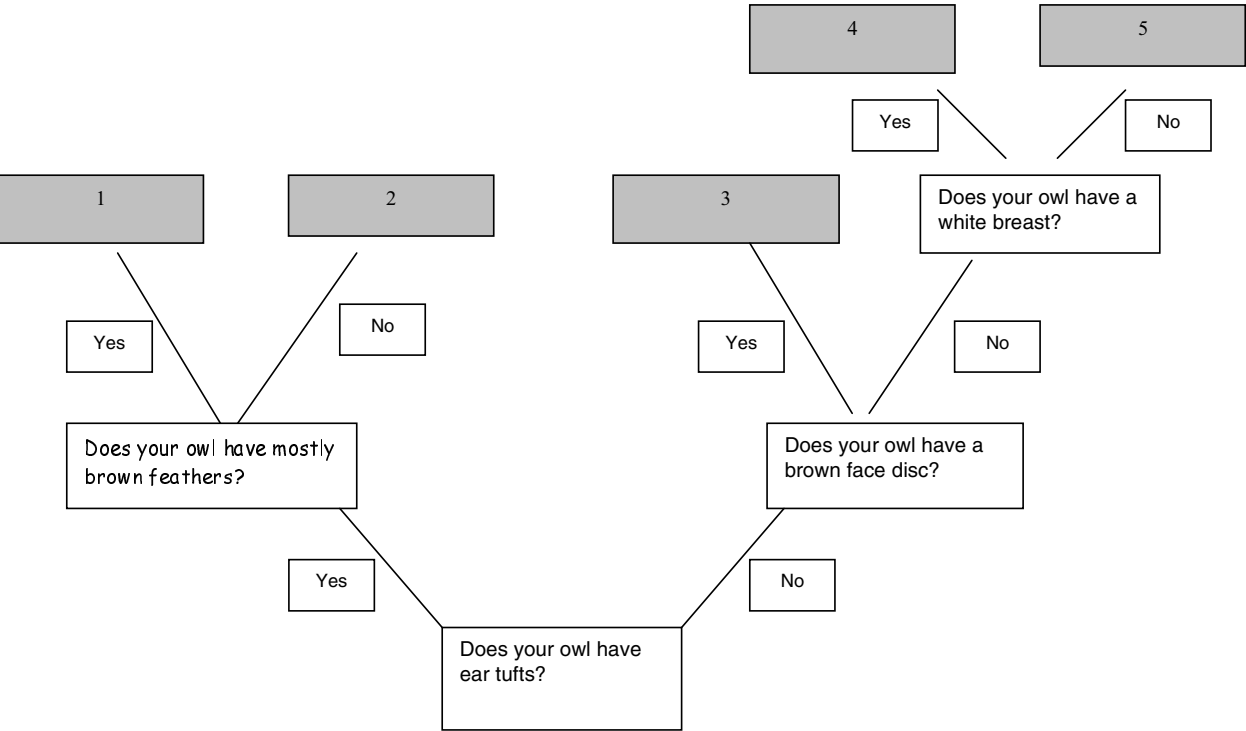
What to do

- Photocopy and enlarge the tree database.
- Photocopy in colour or print out from the CD the pictures of the British owls.
- Cut these out.
- Ask the children to answer the questions on the

tree and stick each owl picture in the correct place.

Extension activities

1. What's the question?
Provide children with a tree diagram from which all the questions have been removed, leaving only the identity of the owls. How many different ways can the children classify the owls to create this diagram?
2. European and/or world owls
Increase the number of owls by including European or World species. Children can research the information for themselves using, for example the Internet and the information available on the Lost Owls CD-ROM.



Branching database 1

Answers to Branching database 1

1. Short-eared owl
2. Long-eared owl
3. Tawny owl
4. Barn owl
5. Little owl

Questions for additional branching databases

Children must make use of the information contained in the table or listen to the sound files of owl sounds to enable them to create a tree diagram.

Branching database 2

- Does this owl nest in trees?
- Is this owl resident in Ireland?
- Does this owl have a weight to length ratio greater than 8:1?
- Does this owl hunt by night?

Branching database 3

- Does the female of this species of owl hoot?
- Is mature woodland the usual habitat of this owl?
- Does this owl nest on the ground?
- Could you see this owl in Cornwall?

Branching database 4

- Is this owl's wingspan greater than or equal to 100cm?
- Does this owl nest on the ground?
- Does this owl hoot?
- Does this owl have ear tufts?

Branching database 5

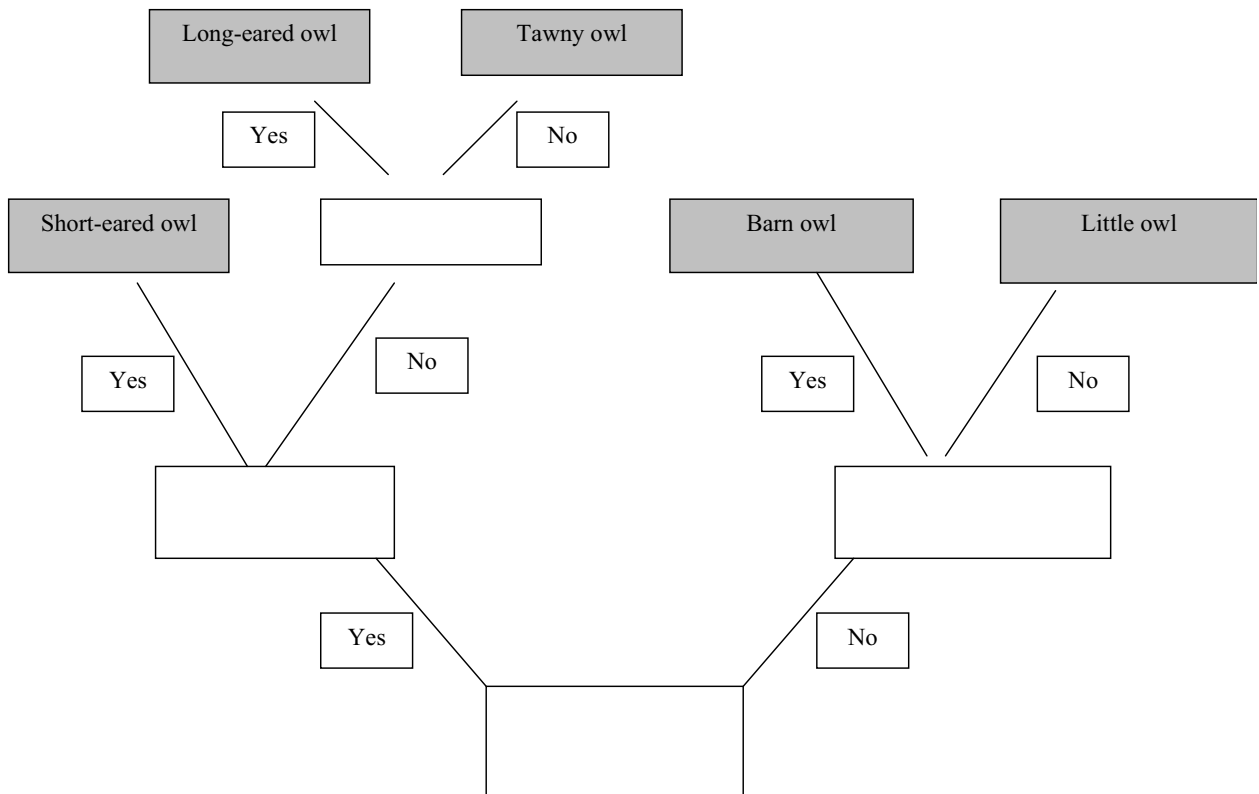
- Does this owl have a pale coloured face disc?
- Does this owl have ear tufts?
- Does this owl mainly eat invertebrates?
- Does this owl nest in buildings?

Branching database 6

- Does this owl have black/brown eyes?
- Does this owl have a heart shaped facial disc?
- Does this owl have ear tufts?
- Does this owl live in Ireland?

Branching database 7

- Does this owl live in Ireland?
- Does this owl screech?
- Does this owl have yellow eyes?
- Does this owl nest in trees?



What's the question?

British owls

Name	Range	Habitat	Description	Nest	Egg colour	No. of eggs	Prey	Day/night hunter	Length	Wingspan	Weight	Call
Barn	England, Wales, South Scotland S & E Ireland	Farmland, rough pasture & hedgerows	Pure white breast, buff upper parts. Heart shaped facial disc, dark eyes	Ledge in a building	White	4-7	Small mammals	Night and day	34 cm	89 cm	315 g	Screech, youngsters hiss
Little	England & Wales	Farmland	Earthy brown with white spots, paler breast. Yellow eyes	Holes in trees	White	3-5	Invertebrates – beetles and worms	Mostly by day	22 cm	56 cm	168 g	High pitched hoot and mewling call
Tawny	England, Wales, Scotland	Mature woodland & hedgerows	Black eyes. Tawny brown crossed lines on breast, streaks and spots on upper parts	Holes in trees	White	2-5	Small mammals and birds	Evening and night	38 cm	100 cm	480 g	Hoot
Long-Eared	Not West Wales, Cornwall or NW Scotland Common in Ireland	Mainly coniferous woodland	Large ear tufts. Indistinct facial disc. Yellow eyes. Feathers mixture of greys and browns. Breast heavily streaked.	Often uses old nests of crows etc.	White	3-6	Small mammals and birds	Night	35 cm	95 cm	289 g	Male makes a low hoot. Female makes a buzzing sound like nose-blowing.
Short-Eared	England, Wales, Scotland	Moorland and young conifer plantations	Large yellow eyes with black rims. Pale buff disc. Warm buff-brown. Streaked breast. Short ear tufts towards centre of head.	Scrape on the ground	White	4-7	Mainly voles but also takes other small mammals and birds.	Day	37 cm	103 cm	355 g	Male makes a series of repeated low hoots; the female makes a 'cheep' sound.